

RETAIL SPACE FOR LEASE

WESTPARK TOWNE PLAZA 8189 WESTPARK STREET



Retail Space Available

NEW PRICE! \$12.00
 2,996 ± SF ~~\$15.00~~/SF NNN
 (NNN Est. \$3.90/SF)

Excellent Location Across from Boise
 Towne Square

Warehouse Bay Area w/Overhead Door
 "Showroom can be converted"

Monument Signage Available on
 Milwaukee

Zoned C-2D



2007 ESRI Demographics

| Radius | Population | Housing Units | Average Household Income |
|---------|------------|---------------|--------------------------|
| 1 Mile | 10,565 | 4,490 | \$59,453 |
| 3 Miles | 96,198 | 39,696 | \$65,541 |
| 5 Miles | 217,938 | 92,464 | \$71,679 |

*Information is from sources deemed reliable,
 but is not guaranteed to be accurate or complete.*

9/8/08



**FOR MORE
 INFORMATION,
 PLEASE CONTACT
 SANDY SMITH
 (208) 342-0305**

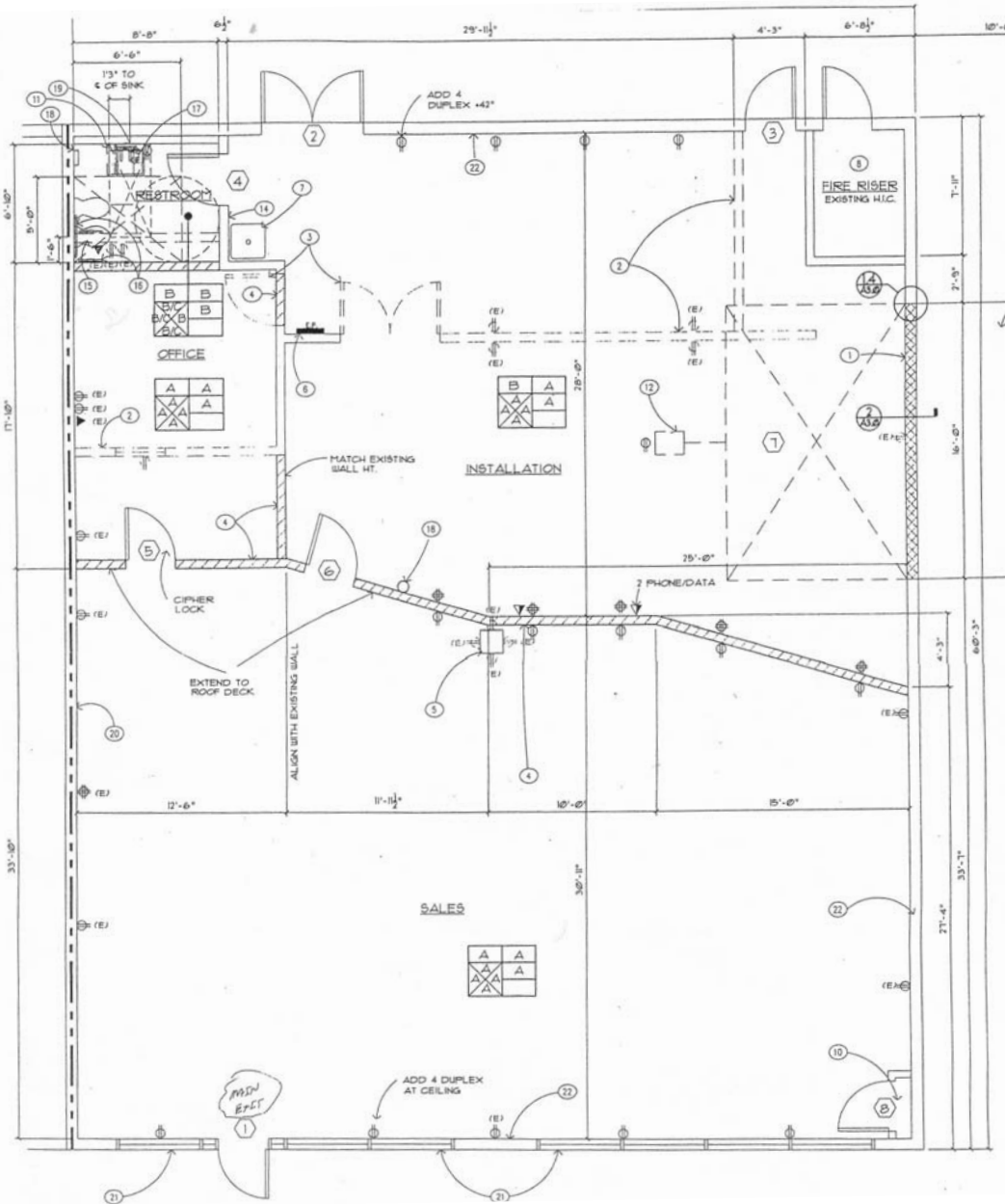
Commercial Real Estate Companies, Inc.
 512 W. Idaho St. Boise, ID 83702

Cell: (208) 830-4008
 Fax: (208) 342-3640

crchoise@qwest.net
 www.crchoise.com

RETAIL SPACE FOR LEASE

WESTPARK TOWNE PLAZA 8189 WESTPARK STREET



**FOR MORE
INFORMATION,
PLEASE CONTACT
SANDY SMITH
(208) 342-0305**

*Information is from sources deemed reliable,
but is not guaranteed to be accurate or complete.*

9/8/08

Commercial Real Estate Companies, Inc.
512 W. Idaho St. Boise, ID 83702

Cell: (208) 830-4008
Fax: (208) 342-3640

crcboise@qwest.net
www.crcboise.com