

SPACE FOR LEASE

MASONIC TEMPLE

217 N. 10TH STREET

1,630 ± SF

Bannock Street Side: \$12.00/SF, Modified NNN

Tenant Pays: Electric and Trash

Landlord Pays: Taxes, Building Insurance, Water, Sewer, and Heat



Downtown Opportunity in the Historic Masonic Temple Building

- *Be a Part of Boise's Downtown Energy!*
- *Favorable Lease Rates with a Variety of Configurations*
- *Available Immediately*
- *Negotiable TI's*
- *Zoned C-5DD*



**FOR MORE
INFORMATION,
PLEASE CONTACT
SANDY SMITH
(208) 342-0305**

Commercial Real Estate Companies, Inc.
512 W. Idaho St. Boise, ID 83702

Cell: (208) 830-4008
Fax: (208) 342-3640

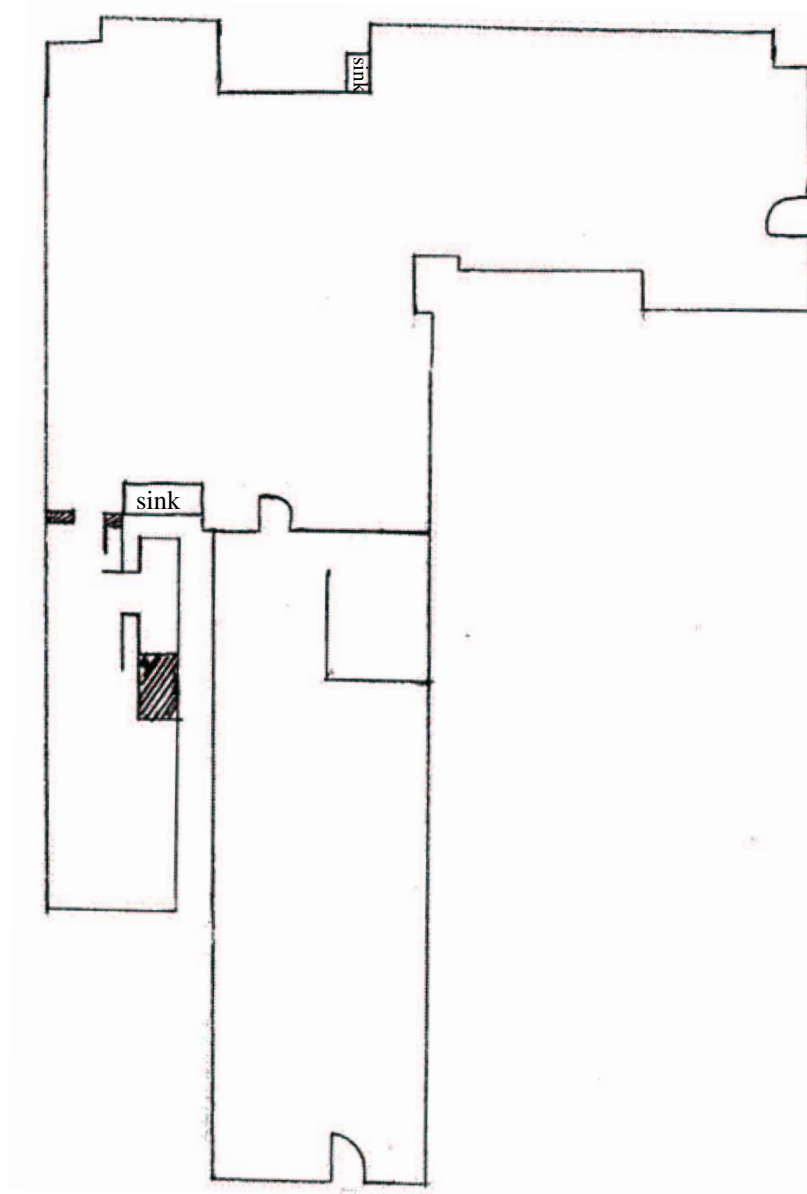
crcboise@qwest.net
www.crcboise.com

Information is from sources deemed reliable,
but is not guaranteed to be accurate or complete.

9/12/07

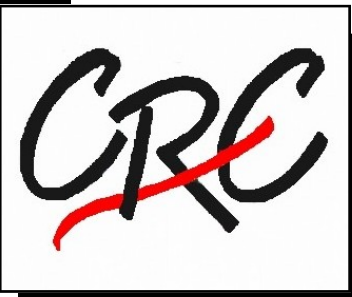
OFFICE SPACE FOR LEASE

MASONIC TEMPLE 217 N. 10TH STREET



↑
Bannock
↓

← 10th Street →



**FOR MORE
INFORMATION,
PLEASE CONTACT
SANDY SMITH
(208) 342-0305**

Information is from sources deemed reliable,
but is not guaranteed to be accurate or complete.

9/12/07

Commercial Real Estate Companies, Inc.
512 W. Idaho St. Boise, ID 83702

Cell: (208) 830-4008
Fax: (208) 342-3640

crcboise@qwest.net
www.crcboise.com