

RETAIL SPACE FOR SALE

J. CRIST GALLERY 223 S 17th STREET



**AMAZING J CRIST ART GALLERY!
THIS BUILDING IS AN "ART PIECE" ITSELF!**

RETAIL SPACE AVAILABLE

Building: 3,314 ± SF
Plus Loft

Lot: .428 Acres

Sale Price: \$725,000.00

**NATURAL LIGHT ABOUNDS IN THIS
CREATIVELY DESIGNED BUILDING
W/A SECURED PROFESSIONALLY
LANDSCAPED ATRIUM!**

- BREAK ROOM W/CATERING KITCHEN ● BUILT-IN FURNITURE & CABINETRY ● SECURITY
- Zoned C-2D



2008 ESRI Demographics			Average Household Income
Radius	Population	Housing Units	
1 Mile	10,459	3,747	\$118,903
3 Miles	65,723	24,518	\$87,652
5 Miles	173,039	66,751	\$85,548

*Information is from sources deemed reliable,
but is not guaranteed to be accurate or complete.*

4-23-09



**FOR MORE
INFORMATION,
PLEASE CONTACT
SANDY SMITH
(208) 342-0305**

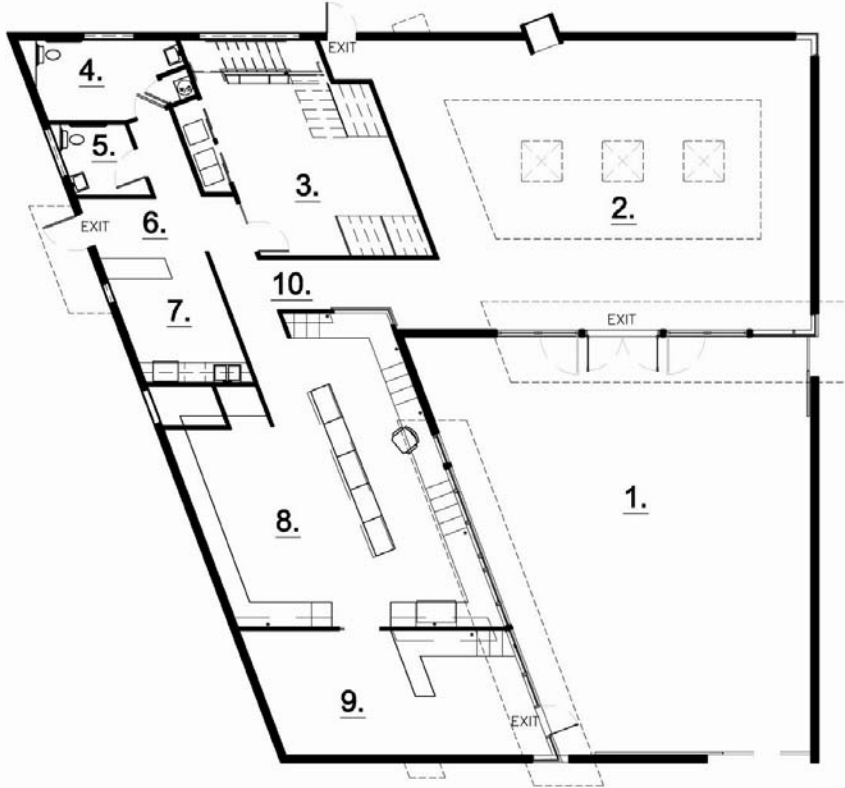
Commercial Real Estate Companies, Inc.
512 W. Idaho St. Boise, ID 83702

Cell: (208) 830-4008
Fax: (208) 342-3640

info@crcboise.com
www.crcboise.com

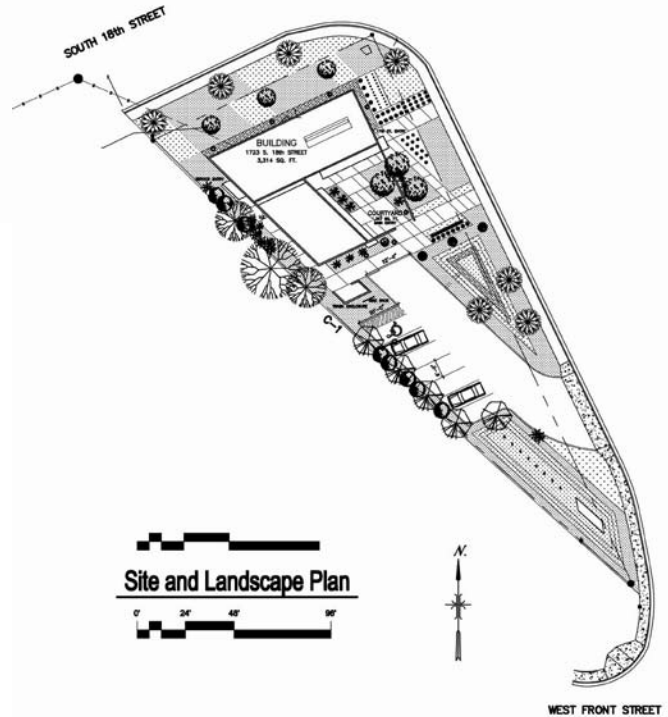
RETAIL SPACE FOR SALE

J. CRIST GALLERY 223 S 17th STREET



Building Plan

1. Entry Courtyard
2. Gallery
3. Picture Framing
4. Restroom
5. Restroom
6. Service Entry
7. Service, Reception, and Break room
8. Office
9. Executive Office
10. Corridor



Site and Landscape Plan



**FOR MORE
INFORMATION,
PLEASE CONTACT
SANDY SMITH
(208) 342-0305**

*Information is from sources deemed reliable,
but is not guaranteed to be accurate or complete.*

Commercial Real Estate Companies, Inc.
512 W. Idaho St. Boise, ID 83702

Cell: (208) 830-4008
Fax: (208) 342-3640

info@crboise.com
www.crcboise.com

4-23-09