

# OFFICE SPACE FOR LEASE

## IDAHO CENTRAL CREDIT UNION 200 N 4<sup>TH</sup> STREET, SUITE 101



**GREAT DOWNTOWN LOCATION! WALK TO THE CAPITOL & COURTHOUSE!**



### DOWNTOWN OFFICE SPACE AVAILABLE!

**SUITE 101: 1,676 ± SF \$10.50/SF FS**  
**"WITH A 3 YEAR LEASE"**  
(FULL SERVICE INCLUDING JANITORIAL)

- NEWLY REMODELED • LOTS OF LIGHT •
- LARGE CONFERENCE ROOM •

PERMIT PARKING SPACES AVAILABLE  
AT \$60.00/MO  
OFF-STREET CLIENT/TENANT PARKING AVAILABLE  
ADJACENT TO BUILDING

ZONED L-OD



**FOR MORE  
INFORMATION,  
PLEASE CONTACT  
SANDY SMITH  
(208) 342-0305**

Information is from sources deemed reliable,  
but is not guaranteed to be accurate or complete.

9-28-09

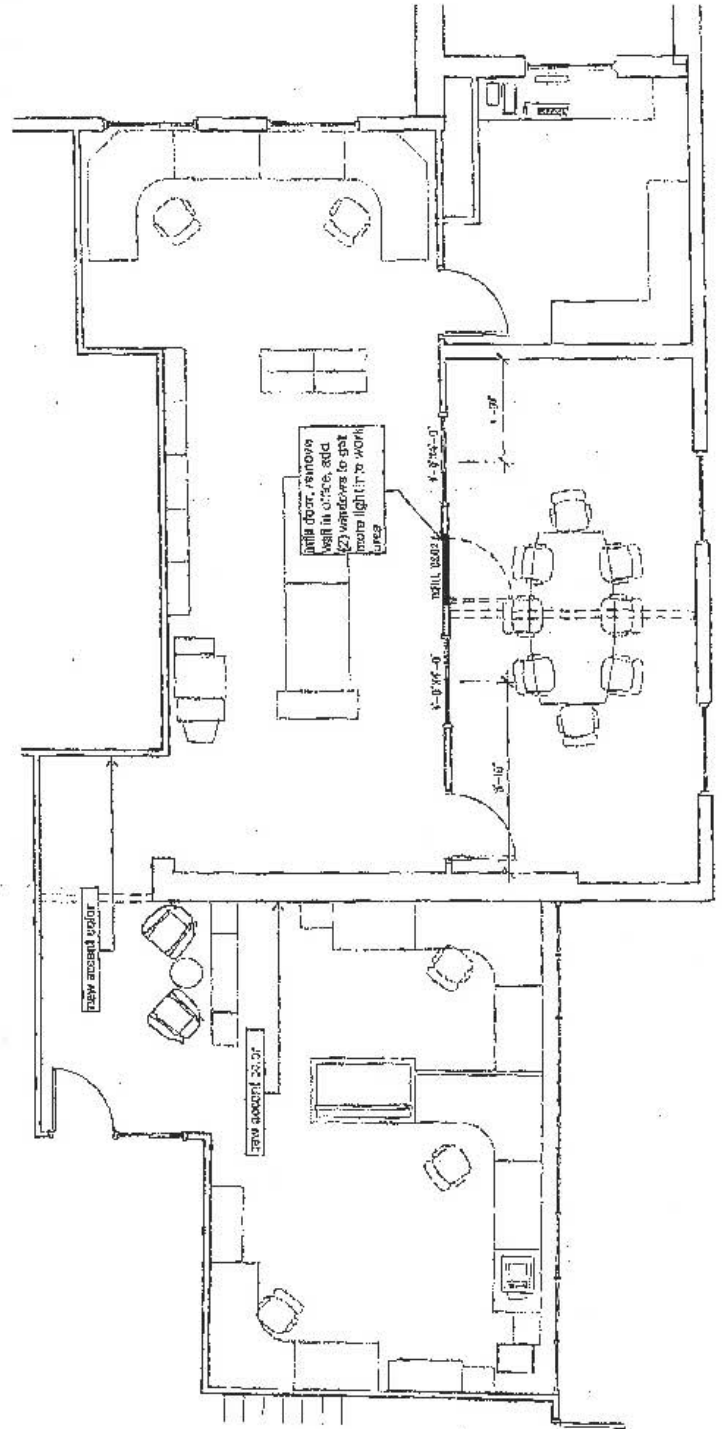
Commercial Real Estate Companies, Inc.  
512 W. Idaho St. Boise, ID 83702

Cell: (208) 830-4008  
Fax: (208) 342-3640

sandy@crcboise.com  
www.crcboise.com

# OFFICE SPACE FOR LEASE

## IDAHO CENTRAL CREDIT UNION 200 N 4<sup>TH</sup> STREET, SUITE 101



**FOR MORE  
INFORMATION,  
PLEASE CONTACT  
SANDY SMITH  
(208) 342-0305**

*Information is from sources deemed reliable,  
but is not guaranteed to be accurate or complete.*

9-28-09

Commercial Real Estate Companies, Inc.  
512 W. Idaho St. Boise, ID 83702

Cell: (208) 830-4008  
Fax: (208) 342-3640

sandy@crcboise.com  
www.crcboise.com