

OFFICE SPACE FOR LEASE

EMERALD BUSINESS CENTER

8150 EMERALD



OFFICE SPACES AVAILABLE

SUITE 100	2,609 ± SF
SUITE 140	1,487 ± SF
SUITE 150	1,060 ± SF
SUITE 160	1,390 ± SF

SUITES MAY BE COMBINED
\$12.00/SF - FSEJ

- READY FOR OCCUPANCY OR TI'S
- DESIRABLE MALL LOCATION
- PLENTY OF FREE PARKING
- CLOSE TO ALL AMENITIES
- EASILY ACCESSIBLE AT TRAFFIC LIGHT CONTROLLED INTERSECTION

ZONED L-OD



**FOR MORE
INFORMATION,
PLEASE CONTACT
SANDY SMITH
(208) 342-0305**

*Information is from sources deemed reliable,
but is not guaranteed to be accurate or complete.*

11/18/08

Commercial Real Estate Companies, Inc.
512 W. Idaho St. Boise, ID 83702

Cell: (208) 830-4008
Fax: (208) 342-3640

Info@crcboise.com
www.crcboise.com

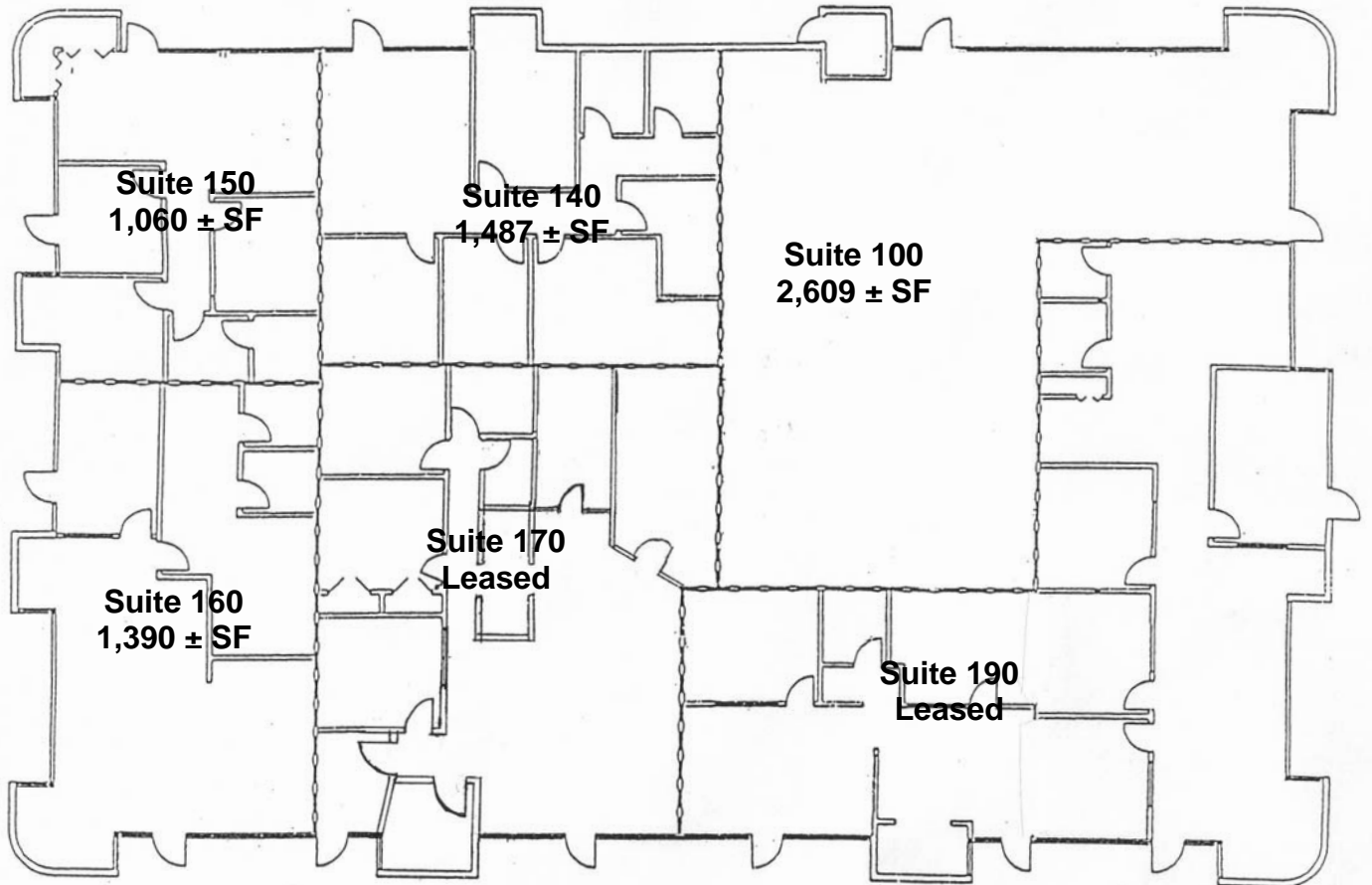


OFFICE SPACE FOR LEASE

EMERALD BUSINESS CENTER

8150 EMERALD

Emerald Business Center Building A



**FOR MORE
INFORMATION,
PLEASE CONTACT
SANDY SMITH
(208) 342-0305**

*Information is from sources deemed reliable,
but is not guaranteed to be accurate or complete.*

11/18/08

Commercial Real Estate Companies, Inc.
512 W. Idaho St. Boise, ID 83702

Cell: (208) 830-4008
Fax: (208) 342-3640

Info@crcboise.com
www.crcboise.com