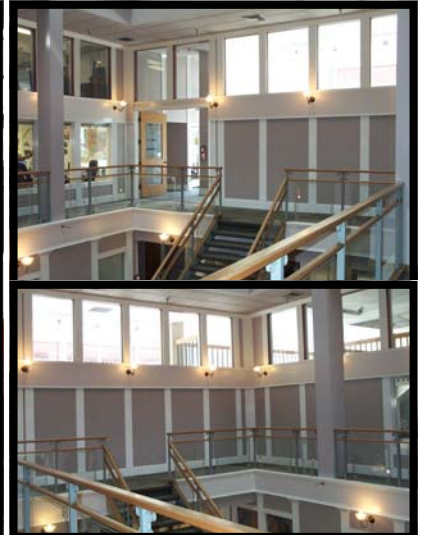


RETAIL/OFFICE SPACE FOR LEASE

ALASKA CENTER 1020 W MAIN STREET



**Exceptional Window Exposure
Spaces Can Be Divided or Combined!**

**Natural
Light
And
Atrium**



Retail Space Available

Space B:	959 ± SF	\$19.25/SF NNN
Space C:	548 ± SF	\$19.50/SF NNN
Total:	1,507 ± SF	

Spaces can be combined for a total of 1,507 ± SF
(NNN estimated at \$3.50/SF)

Office Space Available

Space D:	1,270 ± SF	\$12.00/SF
	(832 ± SF First Floor 438 ± SF Mezzanine)	
Suite 90A:	1,149 ± SF	\$14.00/SF
Suite 270:	5,827 ± SF	\$14.00/SF
Suite 290:	5,767 ± SF	\$14.00/SF

These office rates are full service including janitorial.

Zoned C-5DD



**FOR MORE
INFORMATION,
PLEASE CONTACT
SANDY SMITH
(208) 342-0305**

Information is from sources deemed reliable, but is not guaranteed to be accurate or complete.

9-4-09

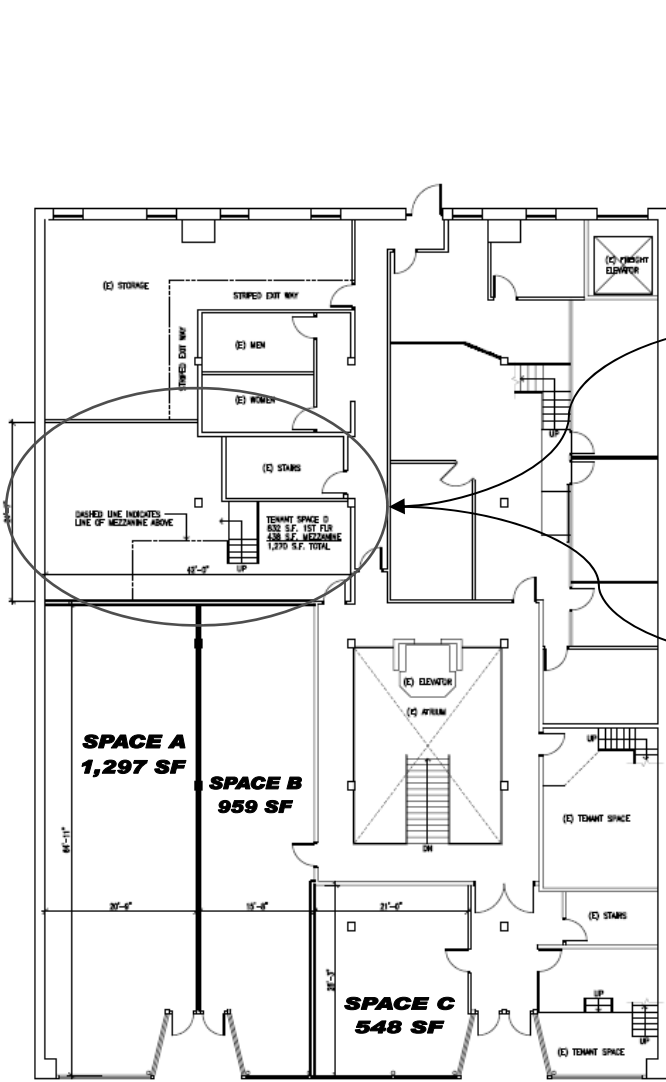
Commercial Real Estate Companies, Inc.
512 W. Idaho St. Boise, ID 83702

Cell: (208) 830-4008
Fax: (208) 342-3640

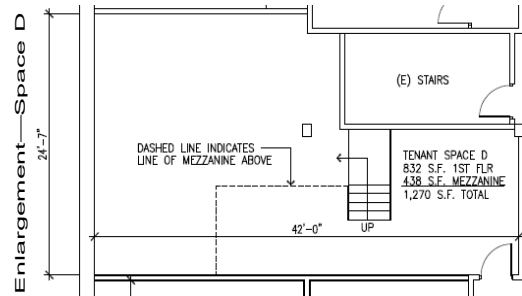
Sandy@crcboise.com
www.crcboise.com

RETAIL/OFFICE SPACE FOR LEASE

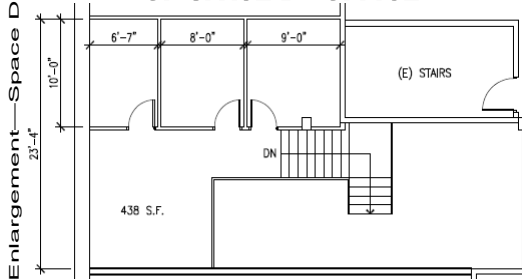
ALASKA CENTER 1020 W MAIN STREET



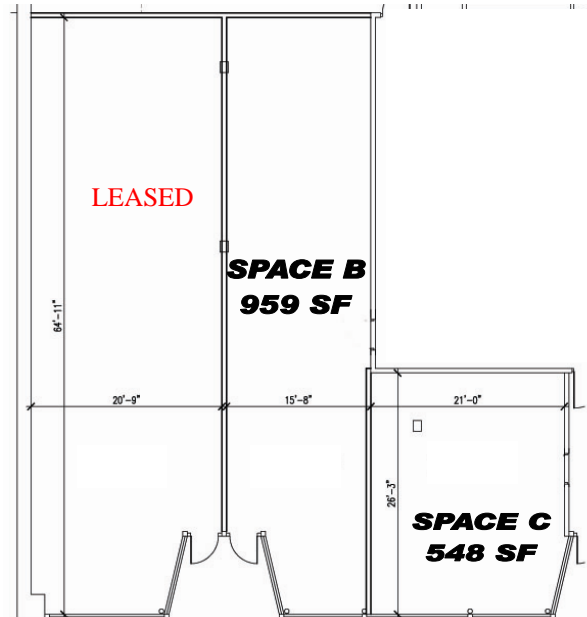
**FIRST FLOOR
RETAIL LEVEL**



**FIRST FLOOR
OF SPACE D - OFFICE**



**MEZZANINE LEVEL
OF SPACE D - OFFICE**



**Spaces can be
divided or combined
to fit your needs.**



**FOR MORE
INFORMATION,
PLEASE CONTACT
SANDY SMITH
(208) 342-0305**

Information is from sources deemed reliable, but is not guaranteed to be accurate or complete.

9-4-09

Commercial Real Estate Companies, Inc.
512 W. Idaho St. Boise, ID 83702

Cell: (208) 830-4008
Fax: (208) 342-3640

Sandy@crcboise.com
www.crcboise.com