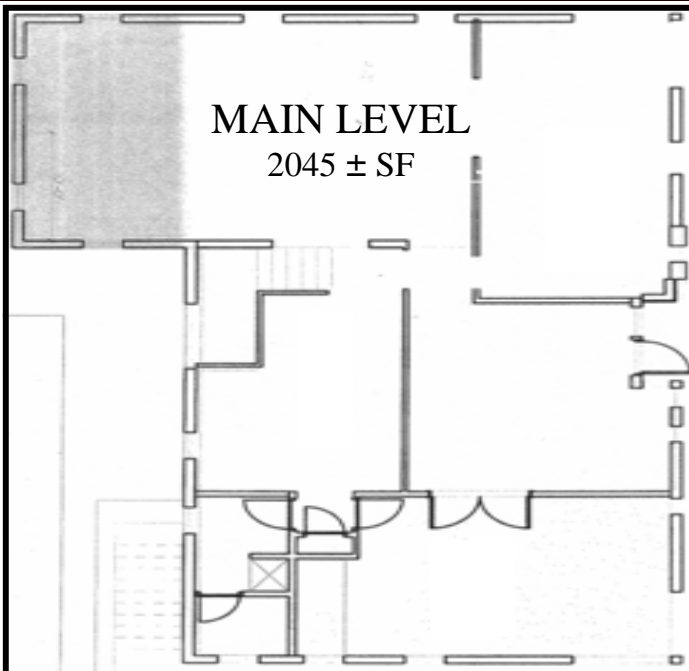


DOWNTOWN OFFICE SPACE FOR LEASE

401 W IDAHO



UNIQUE ART DECO DOWNTOWN BUILDING!



MAIN LEVEL
2045 ± SF

SPACE AVAILABLE

2,045 ± SF \$12.50/SF MODIFIED NET
(TENANT PAYS UTILITIES - 4 CAR PARKS INCLUDED)

**"IF YOUR BUSINESS IS IN THE MARKET -
THIS PROPERTY IS A MUST SEE"**

ZONED C-5DD



**FOR MORE
INFORMATION,
PLEASE CONTACT
SANDY SMITH
(208) 342-0305**

*Information is from sources deemed reliable,
but is not guaranteed to be accurate or complete.*

8-20-09

Commercial Real Estate Companies, Inc.
512 W. Idaho St. Boise, ID 83702

Cell: (208) 830-4008
Fax: (208) 342-3640

Sandy@crcboise.com
www.crcboise.com