

# OFFICE SPACE FOR LEASE

## HAYS PLACE

### 1602 W HAYS STREET



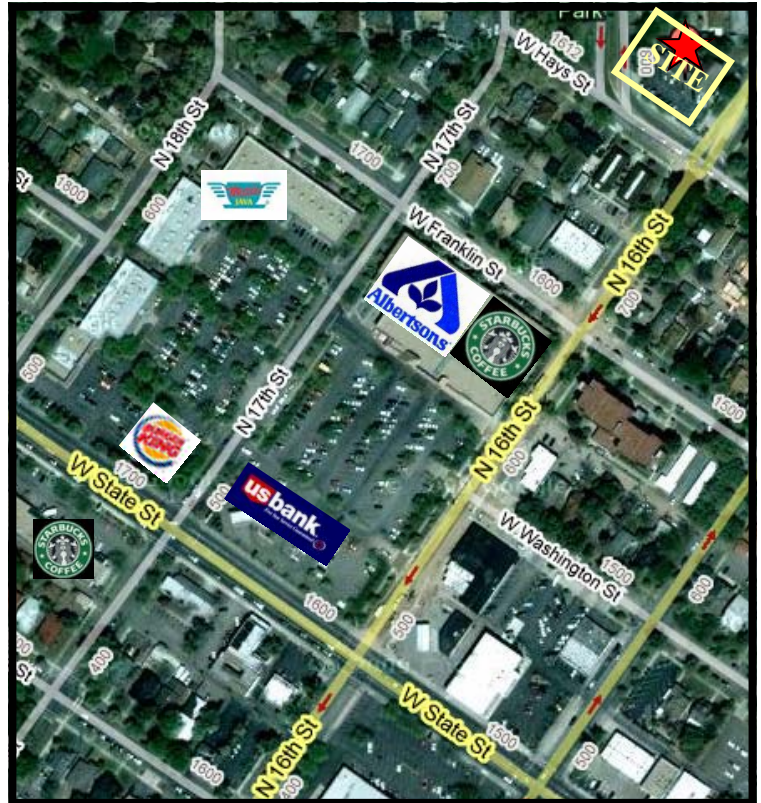
**CENTERALLY LOCATED IN DOWNTOWN PERIPHERAL!  
ON SITE PARKING!**

### OFFICE SPACE AVAILABLE

**SUITE 200: 1,100 ± SF \$10.00/SF FSEJ**  
"CAN BE DEMISED TO SEPARATE OFFICES"  
*(RESTROOM & SHOWER LOCATED IN INTERIOR OF SPACE)*

**SUITE 201: 164 ± SF \$295/MO FSEJ**  
**SUITE 202: 171 ± SF \$295/MO FSEJ**

LOTS OF NATURAL LIGHT • SHORT TERM  
LEASES AVAILABLE • NEWLY REMODELED •  
SHARED CONFERENCE ROOM AVAILABLE • ON  
SITE PARKING AVAIALBALE  
**ZONED R-3D**



**FOR MORE  
INFORMATION,  
PLEASE CONTACT  
SANDY SMITH  
(208) 342-0305**

*Information is from sources deemed reliable,  
but is not guaranteed to be accurate or complete.*

9-14-09

Commercial Real Estate Companies, Inc.  
512 W. Idaho St. Boise, ID 83702

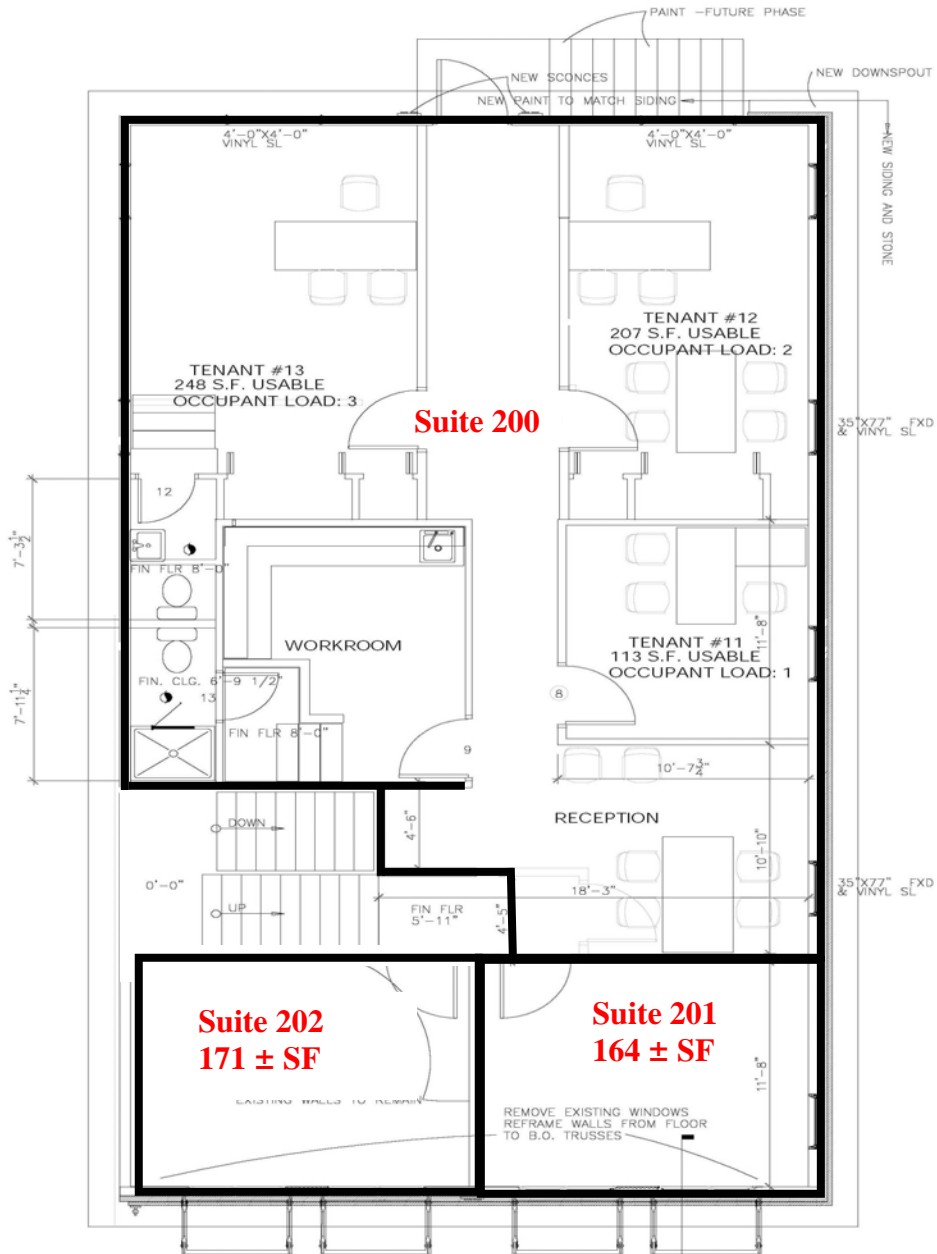
Cell: (208) 830-4008  
Fax: (208) 342-3640

info@crcboise.com  
www.crcboise.com

# OFFICE SPACE FOR LEASE

## HAYS PLACE

### 1602 W HAYS STREET



1 SECOND FLOOR PLAN  
SCALE: 1/4"=1'-0"



**FOR MORE  
INFORMATION,  
PLEASE CONTACT  
SANDY SMITH  
(208) 342-0305**

*Information is from sources deemed reliable,  
but is not guaranteed to be accurate or complete.*

9-14-09

Commercial Real Estate Companies, Inc.  
512 W. Idaho St. Boise, ID 83702

Cell: (208) 830-4008  
Fax: (208) 342-3640

info@crcboise.com  
www.crcboise.com