

# Commercial Building For Sale

815 Ann Morrison Park Drive

Boise, ID



**Price: \$1,250,000**

## Building Details

- 10,444 +/- sf
- Bldg :A 7,366 +/- sf
- Bldg: B 2,804 +/- sf
- 2,000 +/- sf tenant occupied space
- .361 Acres
- Zone Code: C-2DC
- 54 parking spaces

Owner willing to carry loan and can add 2,900+/- sf of second floor space!



**Nancy Lemas**

KW Commercial-Commercial Northwest  
(208) 344-6275 direct • (208) 250-3376 cell

Nancy@commercialnw.com

www.commercialnw.com or www.kwcommercialidaho.com



# Commercial Building For Lease

815 Ann Morrison Park Drive

Boise, ID

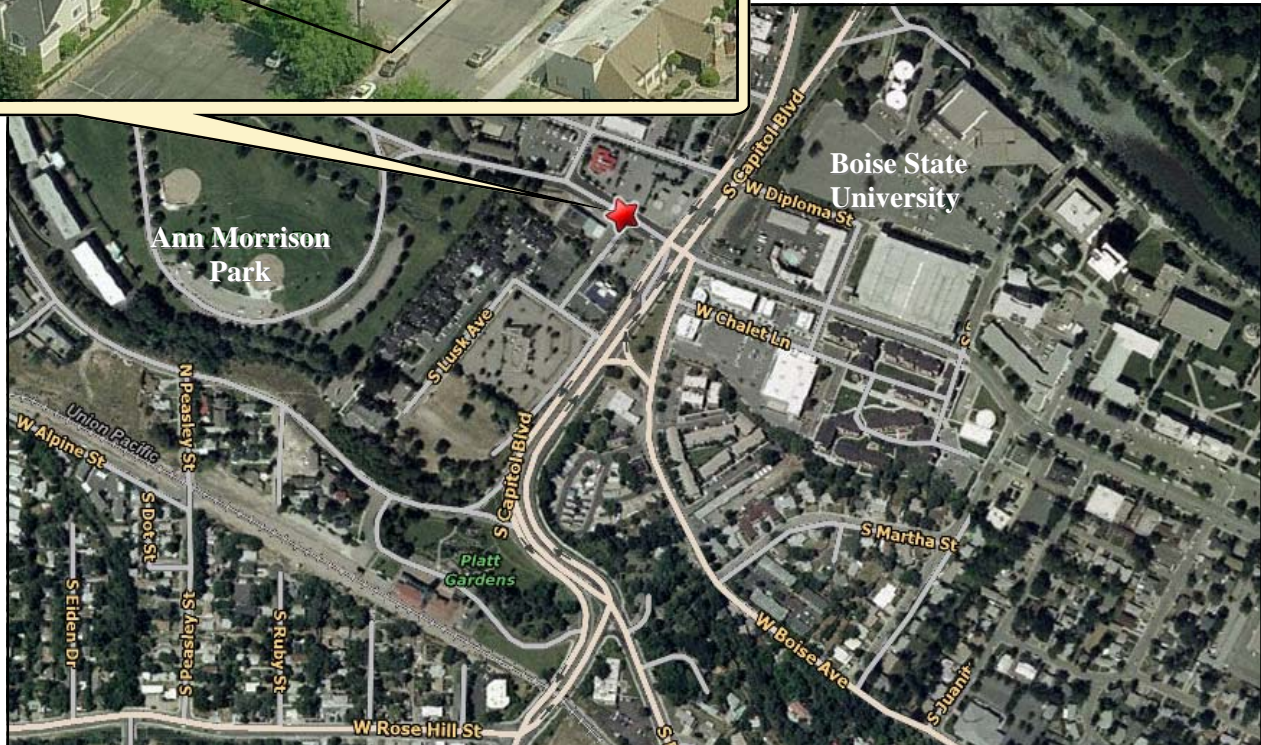


**Lease Rate: \$16.50/sf**  
**Full Service Excluding Janitorial**

- 10,134 +/- divisible leasable sf
- Bldg A: 7,366 +/- sf
- Bldg B: 2,804 +/- sf
- 2,000 +/- sf tenant occupied



Located at the entrance to  
Ann Morrison Park near  
BSU, Idaho State Capitol  
Building, Boise Airport and  
Downtown Boise



Virtual Tour: [www.tourfactory.com/612985](http://www.tourfactory.com/612985)

COMMERCIAL  
NORTHWEST



A Full Service Commercial  
Real Estate Company



**Nancy Lemas**

KW Commercial-Commercial Northwest

(208) 344-6275 direct • (208) 250-3376 cell

Nancy@commercialnw.com

[www.commercialnw.com](http://www.commercialnw.com) or [www.kwcommercialidaho.com](http://www.kwcommercialidaho.com)

