

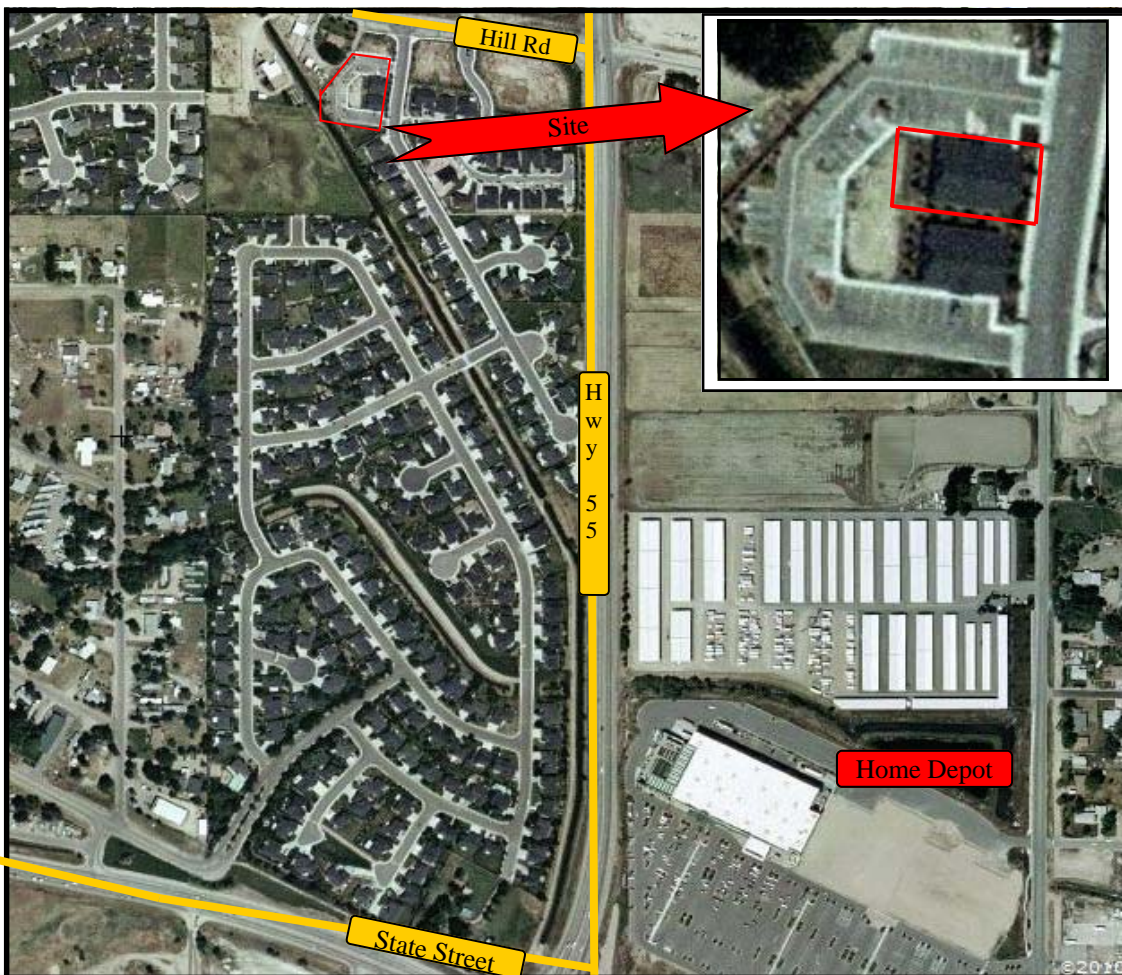
# OFFICE FOR SALE OR LEASE

219 Wooddale Eagle ID



## Building Highlights

- Built in 2005
- 2,240 +/- sf
- Can be used as two separate suites.
- Breakroom
- Reception Area
- Paved Parking
- Zoned MU-DA
- Close to Eagle, St. Al's Medical, and Guerber Park.



**SALE**  
**\$350,000**

**LEASE**  
**\$10.00/sf**  
Full Service Excluding Janitorial



**Nancy Lemas**

KW Commercial-Commercial Northwest

(208) 344-0288 phone (208) 344-0287 fax

(208) 250-3376 cell (208) 344-6275 direct

Nancy@commercialnw.com www.commercialnw.com Keller Williams Realty-Boise

