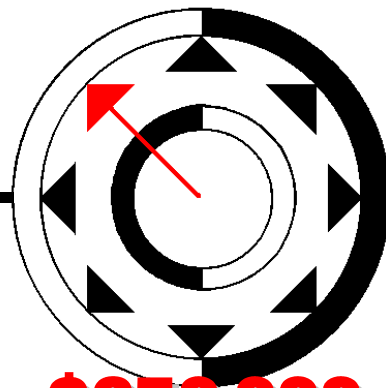


HISTORIC NORTHEND OFFICE INVESTMENT/USER

206 W. Jefferson—Boise, Idaho

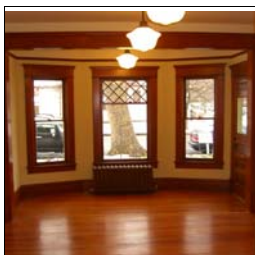


\$650,000
~~**\$749,000**~~

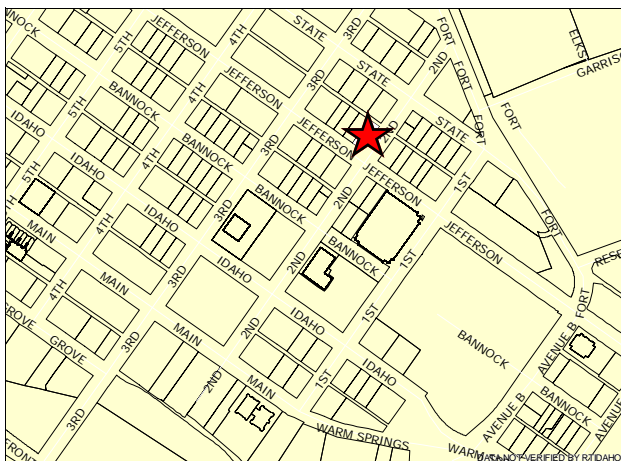
WINNER OF THE 2008
HISTORICAL SOCIETY'S
ORCHID AWARD!



SELLER WILL CARRY FINANCING!



Main Floor = 1,300+/- sf
2nd Floor = 1,200+/- sf
Basement = 500+/- sf
Total = 3,000+/- sf



**COMPLETELY RESTORED
HISTORIC NORTHEND
OFFICE BUILDING FOR SALE**

Across from St. Luke's Hospital,
blocks from County Courthouse,
Capital, & Elk's Rehabilitation

7 private offices, conference rm.
& reception area

CAT 5 wiring

Geothermal heat & central A/C

New plumbing & electrical

Antique hardwood floors

Ample Parking in rear & on street

Zoned R-ODD

Commercial Northwest Real Estate Co.

COMMERCIAL
NORTHWEST



A FULL SERVICE COMMERCIAL
REAL ESTATE COMPANY

Commercial Northwest, LLC
Boise, Idaho 83702
Ph: 208.344.0288
www.commercialnw.com

NANCY LEMAS
Ph: 208.344.0288
Fax: 208.344.0287
nancy@commercialnw.com

This information has been secured from sources we believe to be reliable, but we make no representation or warranties, expressed or implied, as to the accuracy of the information. All references to age, square footage, income and expenses are approximate. Buyers should conduct their own independent investigations and rely only on those results.

206 W. JEFFERSON—BOISE, IDAHO 83702

